



# PRODUCT DATA

## Hollow Wall Anchor

All metal (light duty) cavity fixing for plasterboard and other hollow wall materials up to 38mm in thickness.

Applications	Trades
<ul style="list-style-type: none"> <li>• Electrical fittings</li> <li>• Light fixtures</li> <li>• Brackets</li> <li>• Hooks</li> </ul>	<ul style="list-style-type: none"> <li>• Electrical</li> <li>• Plumbing</li> <li>• Painters and decorators</li> <li>• Data and communications installation</li> </ul>

<b>Material</b>	 CS Carbon Steel
-----------------	---

<b>Finish</b>	 Z/P Zinc Plated (RoHS Compliant)
---------------	--

### Anti-rotation barbs

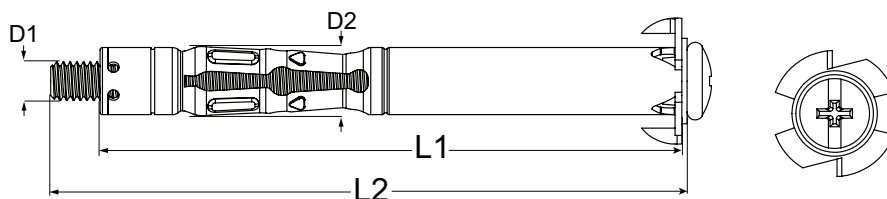


### Features

- Combination Drive: Philips/Slot
- Cavity Fixing: Plasterboard and other hollow wall materials
- Barbs: Anti-rotational spikes built onto the flange to prevent the anchor from spinning



Part	QFind	Size	Dia Ø		Body Length		Wall Thickness	Clearance hole diameter	Pack Qty
			D <sub>1</sub> (mm)	L <sub>1</sub> (mm)	L <sub>2</sub> (mm)	D <sub>2</sub> (mm)			
MWHDZPCM040030	<b>MWH100</b>	M4	4	23.5	30	0 - 4	8	100	
MWHDZPCM040641	<b>MWH101</b>	M4	4	35.0	41	4 - 9	8	100	
MWHDZPCM041147	<b>MWH102</b>	M4	4	40.0	47	9 - 15	8	100	
MWHDZPCM041753	<b>MWH103</b>	M4	4	46.0	53	15 - 21	8	100	
MWHDZPCM043167	<b>MWH104</b>	M4	4	60.0	67	30 - 38	8	100	
MWHDZPCM050546	<b>MWH105</b>	M5	5	37.0	46	5 - 13	10	50	
MWHDZPCM050759	<b>MWH106</b>	M5	5	50.0	59	5 - 17	10	50	
MWHDZPCM060546	<b>MWH107</b>	M6	6	37.0	46	4 - 13	11	50	
MWHDZPCM060759	<b>MWH108</b>	M6	6	50.0	59	5 - 18	11	50	



Disclaimer: While every reasonable effort has been made to ensure that this document is correct at the time of printing, Hobson Engineering, its agencies and employees, disclaim any and all liability to any person in respect of anything or the consequences of anything done or omitted to be done in reliance upon the whole or any part of this document.

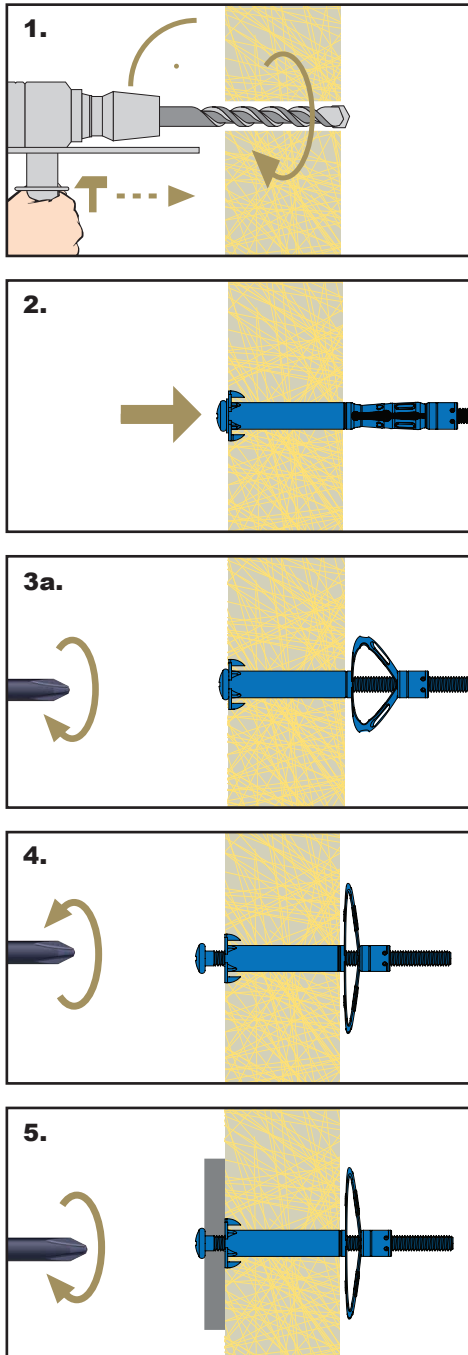
Bolt Tension | Anti-Vibration | Product Reliability | Traceability



# PRODUCT DATA

## Hollow Wall Anchor

### Installation

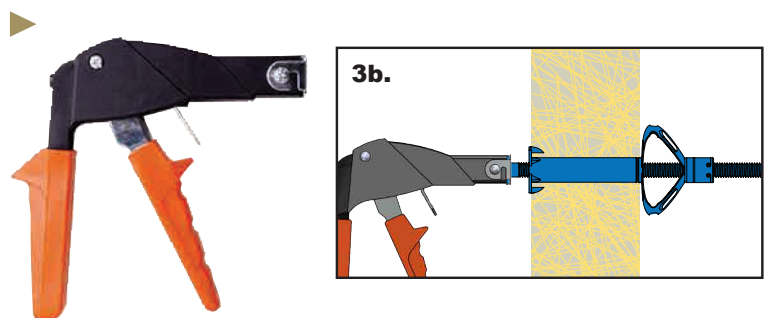


### Installation Guides

1. Drill a hole to recommended clearance through the base material.
2. Insert the anchor and tap the head until the barbs are embedded in the base material and the head is flush with the surface.
- 3a. Using a screwdriver screw in clock wise direction. The effort required to turn the screw will increase as the legs of the anchor collapse behind the wall. Tighten until firm resistance is felt.
- 3b. For faster setting- back the screw head out 2-3 mm. Fit the tool over the head of the screw then squeeze the tool to pull up the legs of the anchor in the wall cavity.
4. Remove the screw.
5. Place the screw back into the anchor through a fixture with a clearance, tighten the screw until the fixture is fixed.

### Recommended Setting Tool

Hollow Wall Anchor Tool	
Part	Description
MATWHR	M4-M6 Ratchet Style



Disclaimer: While every reasonable effort has been made to ensure that this document is correct at the time of printing, Hobson Engineering, its agencies and employees, disclaim any and all liability to any person in respect of anything or the consequences of anything done or omitted to be done in reliance upon the whole or any part of this document.

Bolt Tension | Anti-Vibration | Product Reliability | Traceability

[hobson.com.au](http://hobson.com.au) **QUALITY FASTENERS SINCE 1935**